

T Y P E F C A

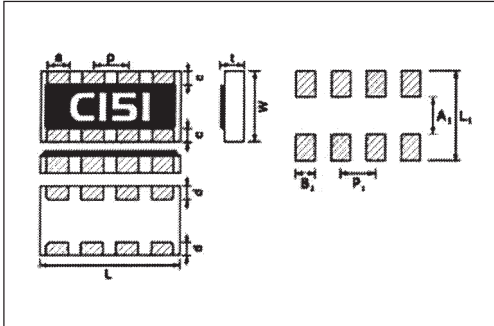
FEATURES

Compact size for space saving
Excellent solderability

APPLICATIONS

- Input/Output ports circuits
- LCD monitors and Panel circuits
- EMI applications

CONSTRUCTION & DIMENSIONS



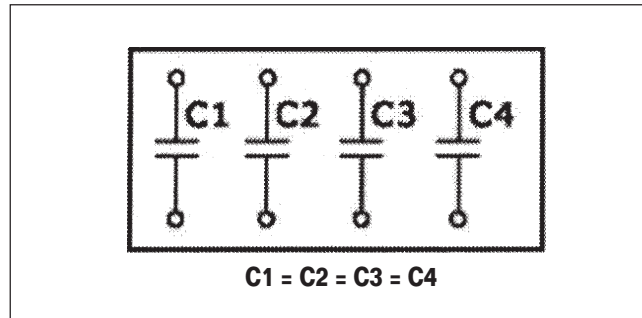
| Type | L | W | t | a | c | d | p |
|------|-------------|-------------|-------------|-------------|-------------|-------------|----------|
| 1206 | 3.20 ± 0.30 | 1.60 ± 0.20 | 0.50 ± 0.10 | 0.50 ± 0.20 | 0.30 ± 0.20 | 0.30 ± 0.20 | 0.80 Typ |

(mm)

GENERAL SPECIFICATIONS

| Item | Specification |
|-----------------------------|-------------------------------------|
| Capacitance Range | 10~220pf |
| Capacitance Tolerance | ±10% (K), ±20% (M) |
| Temperature Characteristic | ΔC: +20%/-20% (-25°C~+50°C) |
| Dissipation factor | Less than 3.0% (25°C, 1kHz*, 1Vrms) |
| Operating Temperature Range | -25°C~+85°C |
| Rate Applied | 25V |

CIRCUIT



RECOMMENDED PAD SIZE

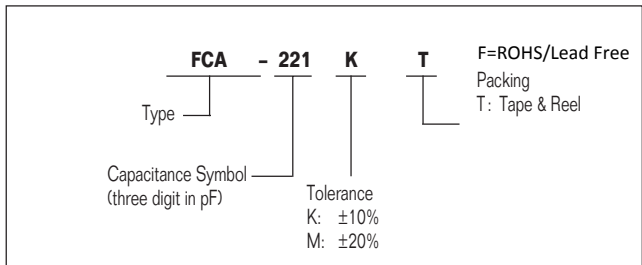
| A ₁ | B ₁ | P ₁ | L ₁ |
|----------------|----------------|----------------|----------------|
| 0.8 | 0.5 | 0.8 | 2.6 |

PACKAGING

TAPE & REEL = 5000 PCS./Reel

Test condition is 1kHz, 1Vrms ±10% and the environment temperature is 25°C ± 2°C. If the measuring frequency is 1Mhz, the measurement value may be different.

ORDERING INFORMATION



ATTENUATION CHARACTERISTICS

